

MAKE SEWING EASY

SUPREME 舒普

NEW

冲缝机

Automatic Punching and Pattern Sewing Machine

SP-2210AS-H/CF

SP-3020AS-H/CF

SP-6030AS-H/CF



主要用于鞋子、箱包、帽子等产品,一次装料可完成冲孔、电绣、车缝三道工艺,全程自动化操作,一人可操作多台机器。冲孔范围为0.8mm-6mm。

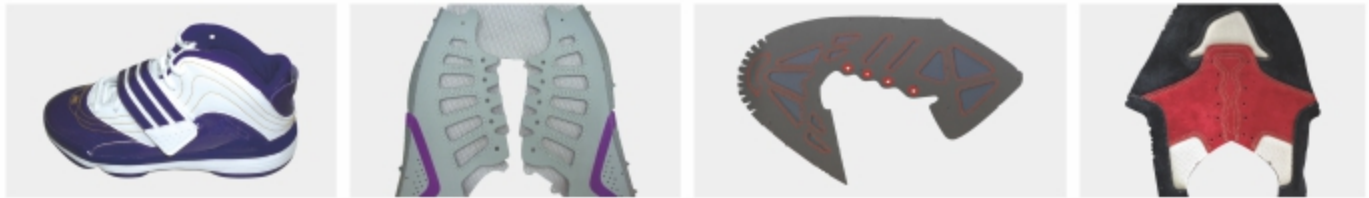
Mainly used for shoes ,bags and caps,this machine ,with one feed,can finish three procedures : punching,embroidery and sewing.One worker can operate many machines based on the automatic operating .The punching area is 0.8mm-6mm.



自动化缝纫科技的创导者

客户体验

Customer experience



实例分析

Comparisons

传统工艺 The traditional process	VS	自动化生产工艺 Automatic process
<p>Step 1 装夹产品、车缝、取料 Clamping product, machine sewing and reclaiming material.</p> <p>Step 2 划线、冲孔(6孔) Drawing ,punching (6holes)</p>		<p>装夹产品、车缝、冲孔(6孔)一人完成 One worker operating all the procedures of Clamping , machine sewing and punching (Six holes).</p> <p>普通工艺需要2人加工完成;采用冲缝机1人可一次性完成冲绣缝工序,孔型、线迹美观。并且1人可同时操作两台设备。 Traditional procedures require two workers. Automatic punching and sewing machine finishes punching,embroidery and sewing in one process with beautiful holes and lines .One worker can operate two machines simultaneously.</p>
<p>10小时产量1800件/台 10hours productivity 1800pieces/set</p>		<p>10小时产量4000件/台 10 hour productivity 4000pieces/set</p>

型号 Model	平缝 Flat Seam	2倍钩线 2-time hook	缝制面积 Sewing area	针距 Needle length	切线装置 Cutting	扫线装置 Scavenging device	最高缝切速度 Highest sewing speed	气压 Air pressure
SP-2210AS	★	★	220 × 100mm	0.05 - 12.7mm	★	★	2,700 rpm	1.8 l/min
SP-3020AS	★	★	300 × 200mm	0.05 - 12.7mm	★	★	2,700 rpm	1.8 l/min

型号Model	SP-2210AS-H/CF	SP-3020AS-H/CF
线迹型式Line	单针平缝Single-needle flat seam	
最高缝切速度Highest sewing speed	2,700 rpm	
缝制区域(X × Y) Sewing area (X × Y)	最大Max.220 × 100 mm	最大Max.300 × 200 mm
间歇压脚上升量 Rising amount by intermittent presser foot	22 mm	
间歇压脚行程 Stroke by intermittent presser foot	0或2 - 10 mm (出厂设置: 3mm) 0 or 2 - 10 mm (Original setting:3mm)	
马达Motor	AC伺服马达550W AC servomotor 550W	
电源Power	单相220V Single phase 220V , 3相380V Three phase	
气压Air pressure	0.5 Mpa 1.8 l/min	

以上型号仅供参考, 详细情况请咨询当地经销商。
The above types are only for reference, and you can consult local distributors for details.

为了改良, 产品规格若有变更, 恕不另行通知。为安全起见, 使用之前, 请仔细阅读使用手册。
Specifications are subject to change for improvement without further notice. Please carefully read the operating manual before use for safety.